

Fig 1: Investigational mode: FNIR(N, 1, 0) vs. most accurate (yitu\_4)

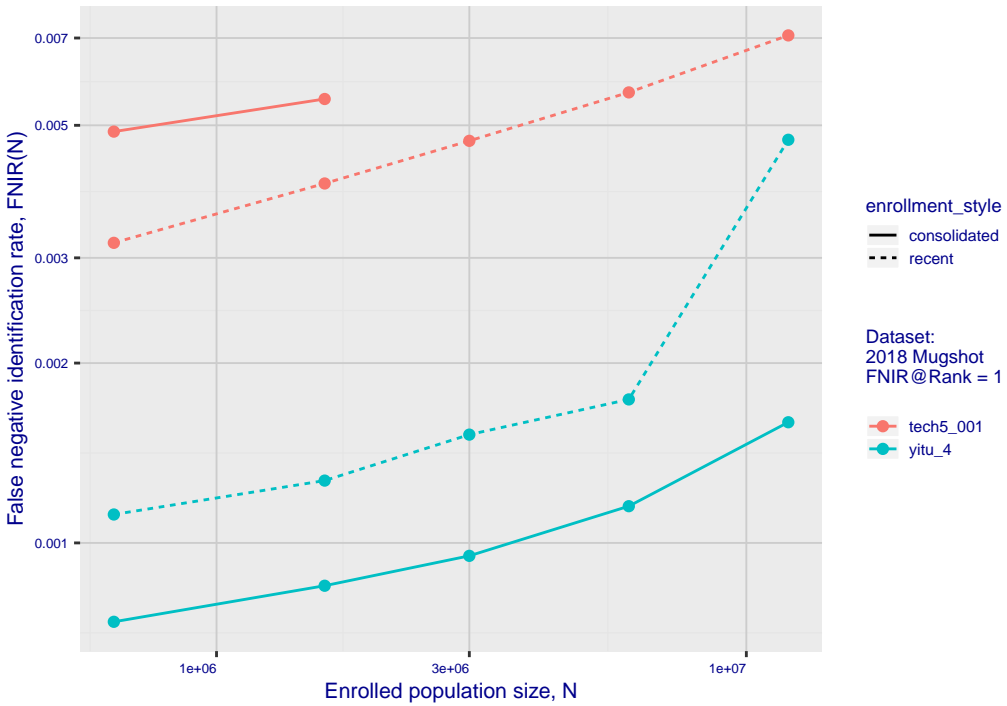


Fig 3: Identification mode: FNIR(N, L+1, T) vs. most accurate (nec\_3)

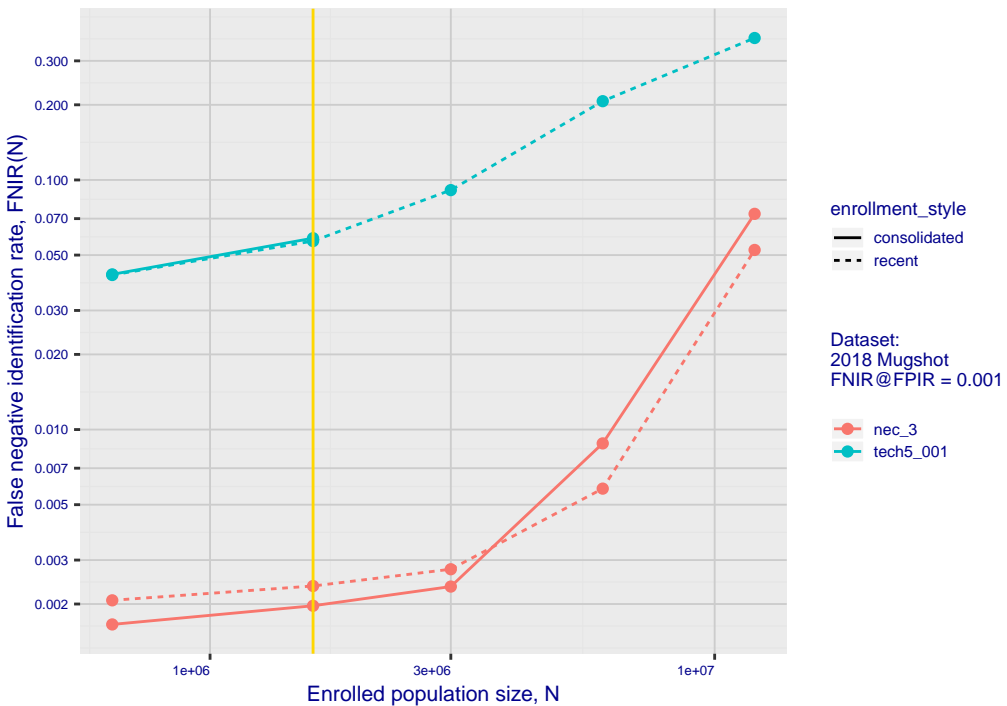


Fig 2: DETs by enrollment type

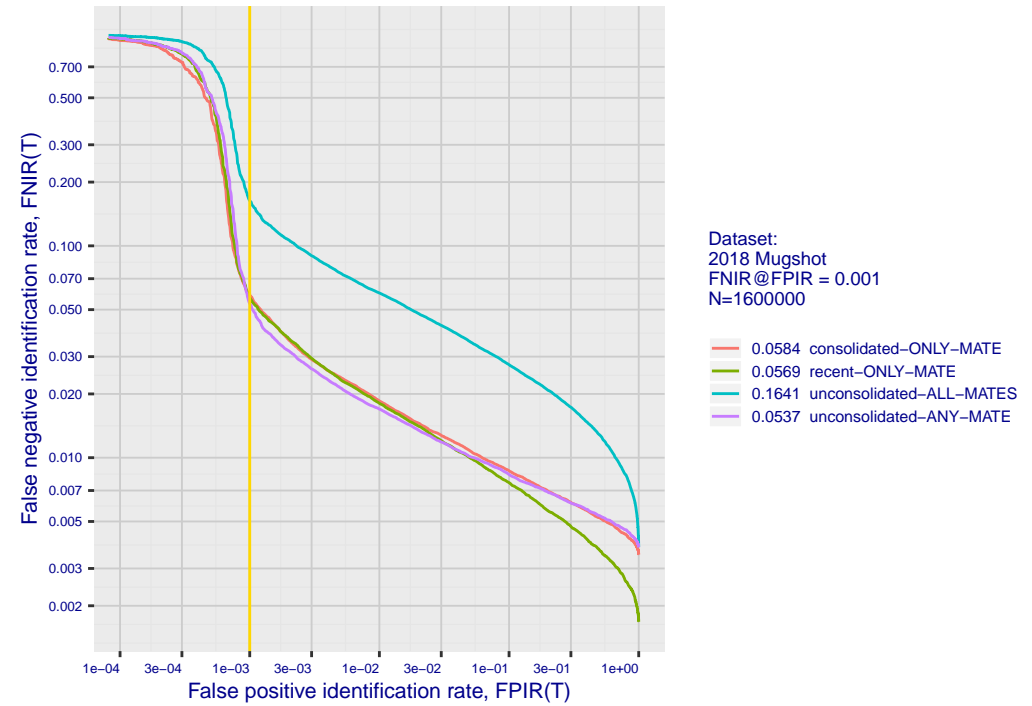


Fig 4: DET for various N. Links connect points of equal threshold.

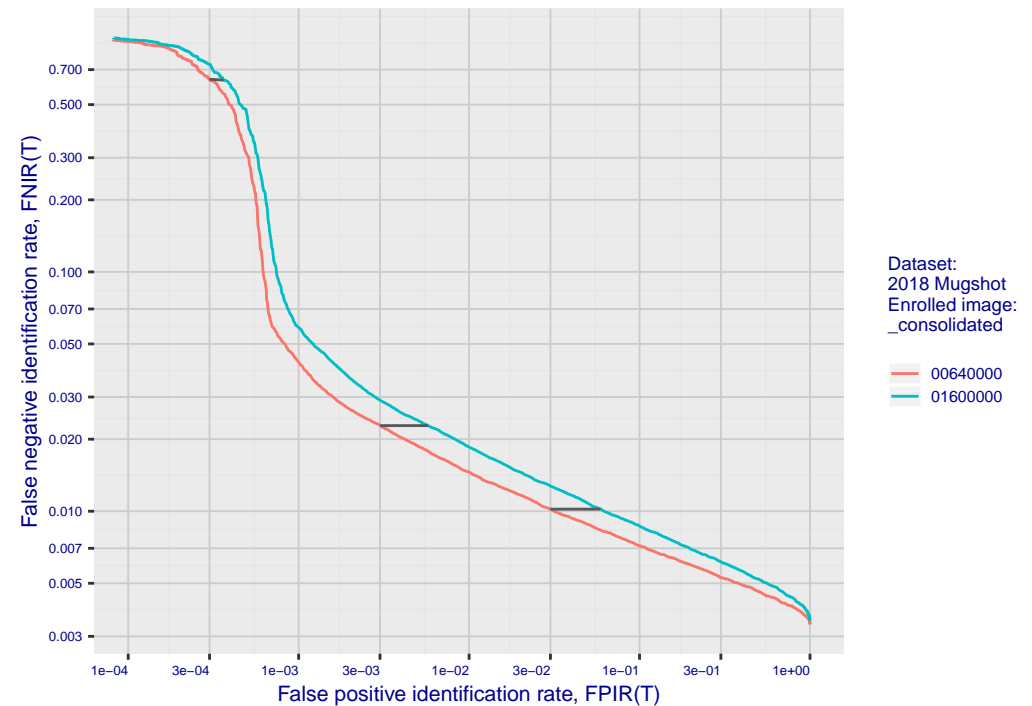


Fig 5: Dependence on T by number enrolled identities

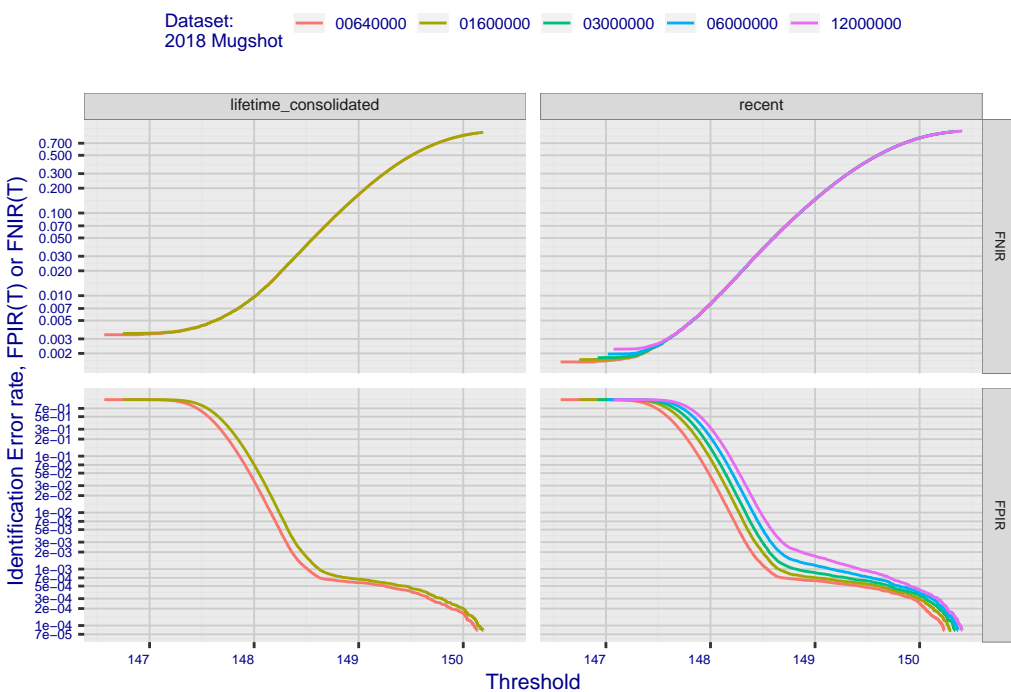


Fig 7: Investigational mode: FNIR(1600000, R, 0) by probe type

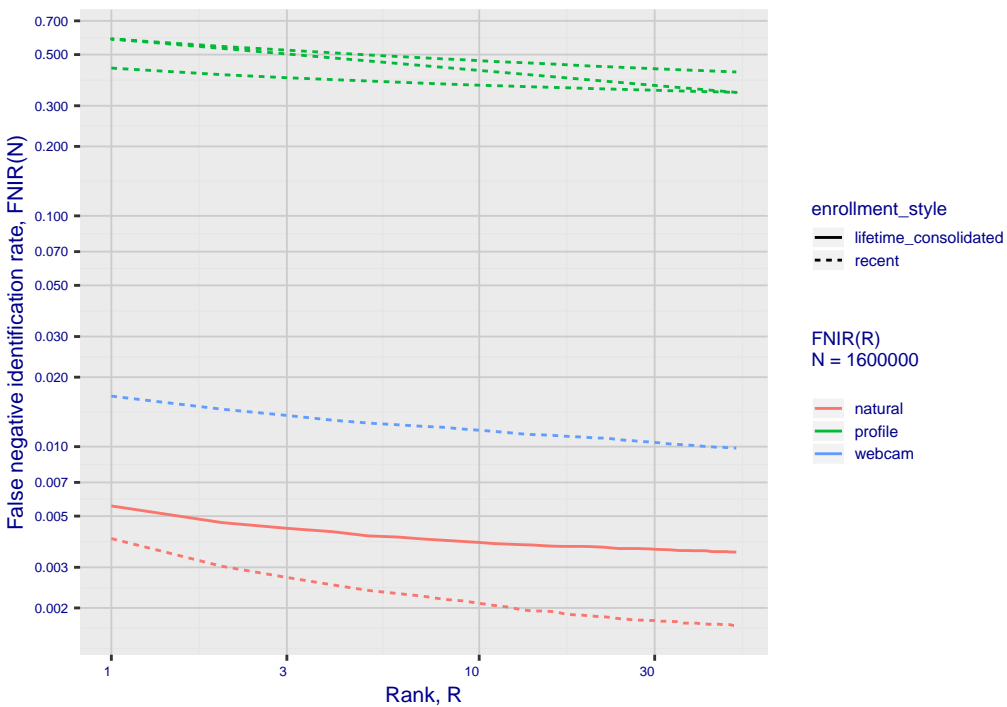


Fig 6: FPIR dependence on T by probe type

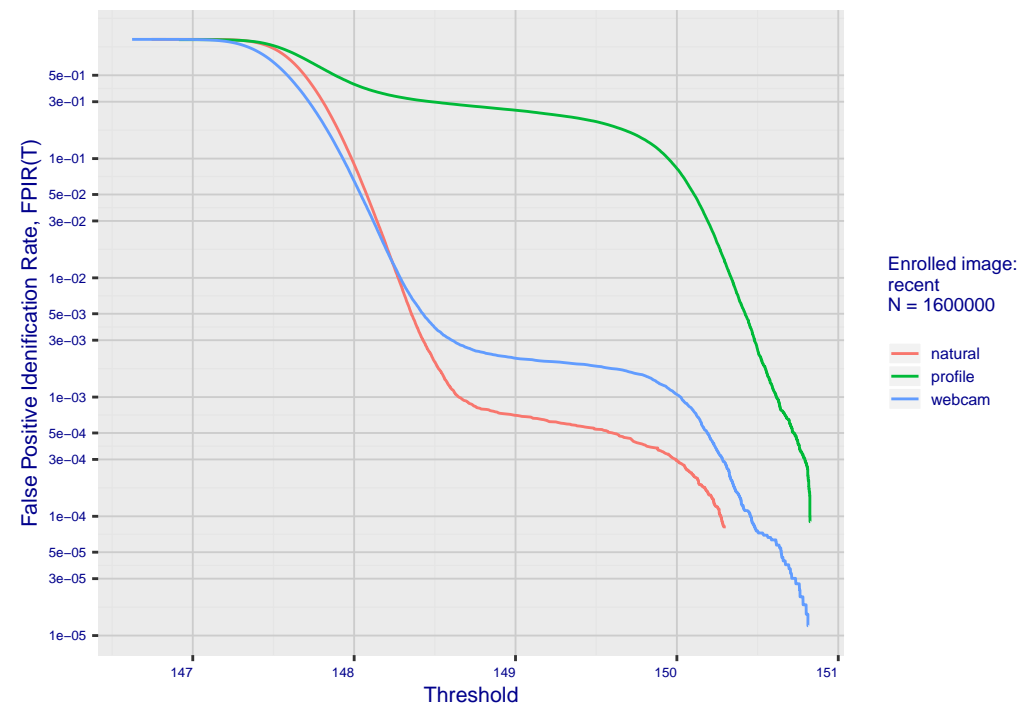


Fig 8: FPIR vs. Selectivity

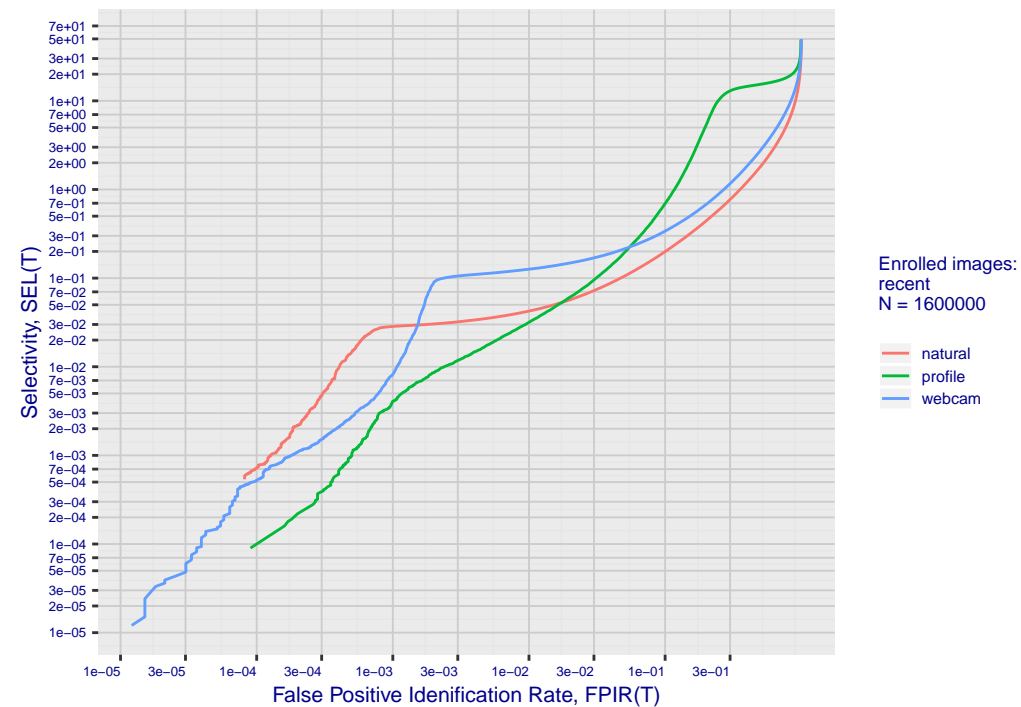


Fig 9: Solo-Twin and Twin-Twin similarity scores

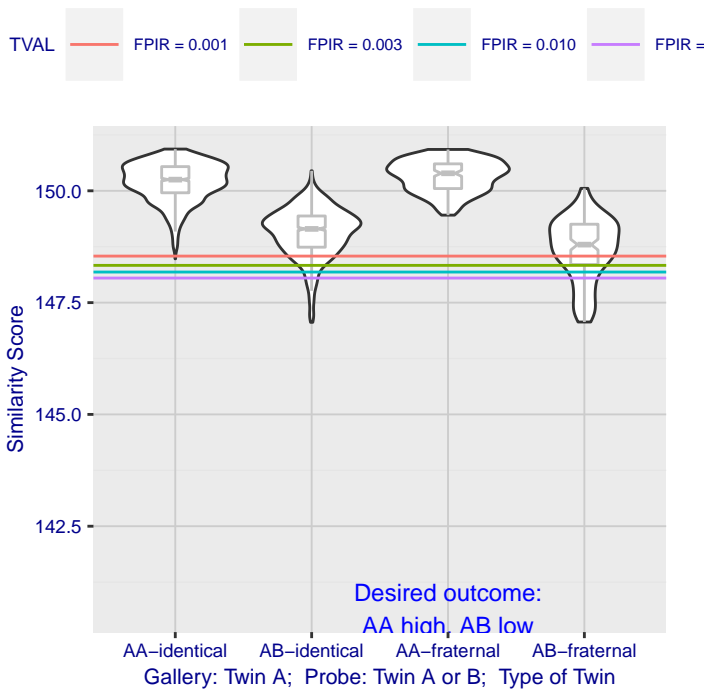


Fig 10: Template duration; search duration vs. N

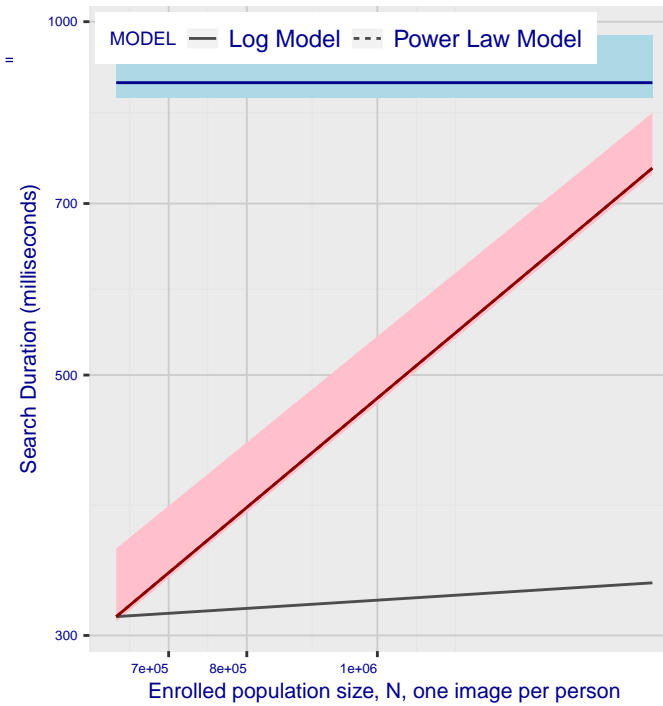


Fig 11: Datasheet

Algorithm: tech5\_001  
Developer: Tech5 SA  
Submission Date: 2019\_08\_19  
Template size: 1536 bytes  
Template time (2.5 percentile): 861 msec  
Template time (median): 887 msec  
Template time (97.5 percentile): 974 msec  
Investigation rank 45 — FNIR(1600000, 0, 1) = 0.0040 vs. lowest 0.0010 from sens  
Identification rank 72 — FNIR(1600000, T, L+1) = 0.0569  
FPIR = 0.001 vs. lowest 0.0018 from sensetime\_003