

Fig 1: Investigational mode: FNIR(N, 1, 0) vs. most accurate (yitu_4)

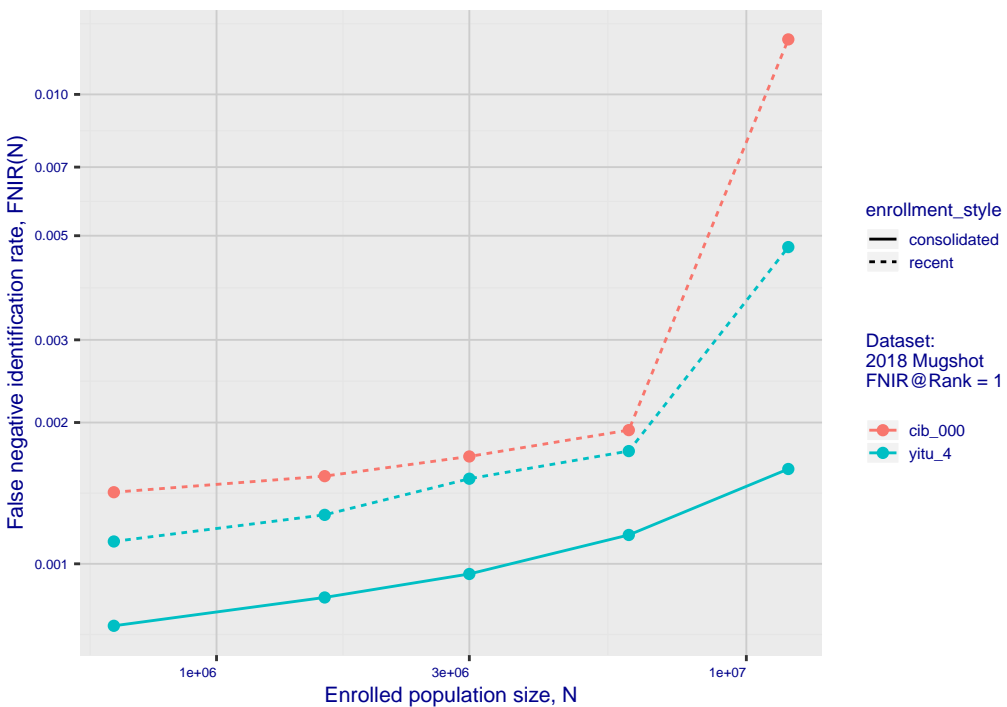


Fig 2: DETs by enrollment type

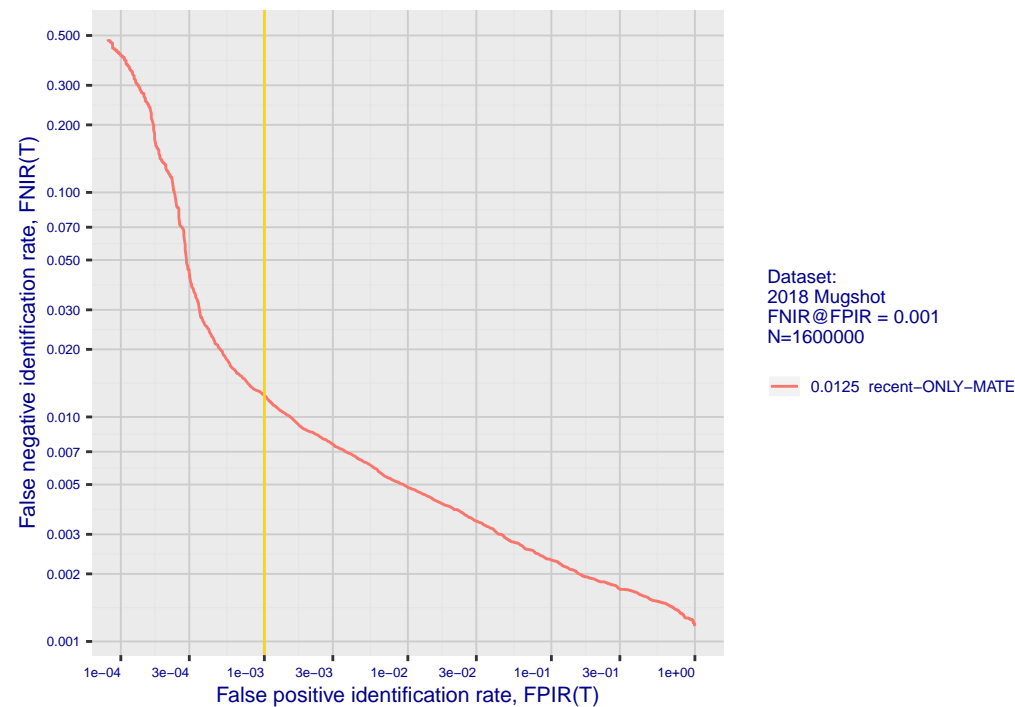


Fig 3: Identification mode: FNIR(N, L+1, T) vs. most accurate (sensetime_004)

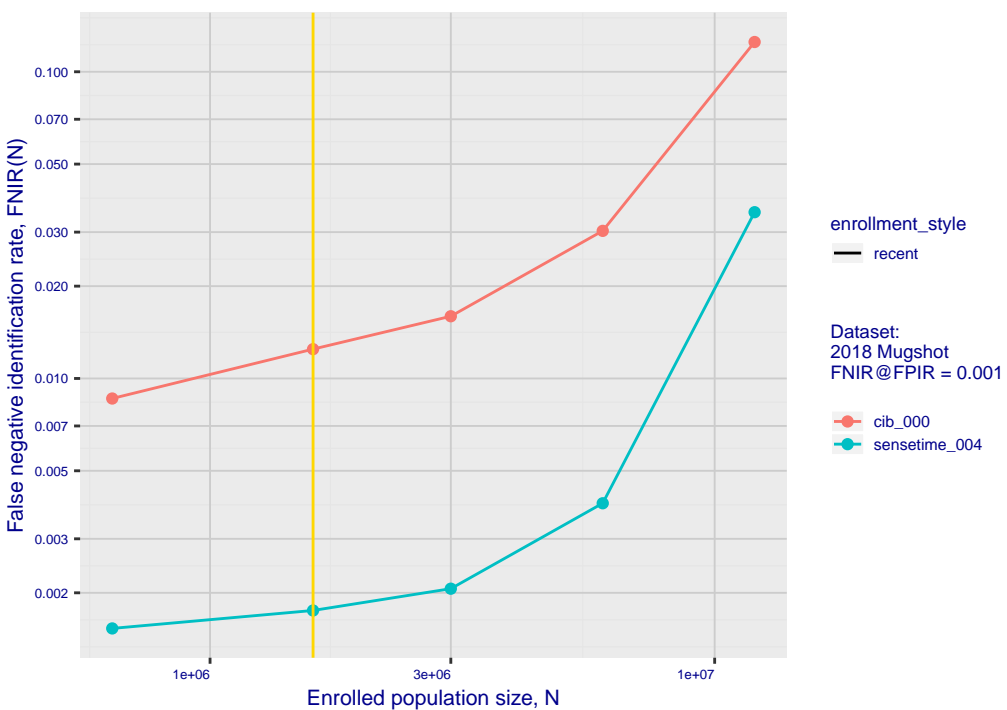


Fig 5: Dependence on T by number enrolled identities

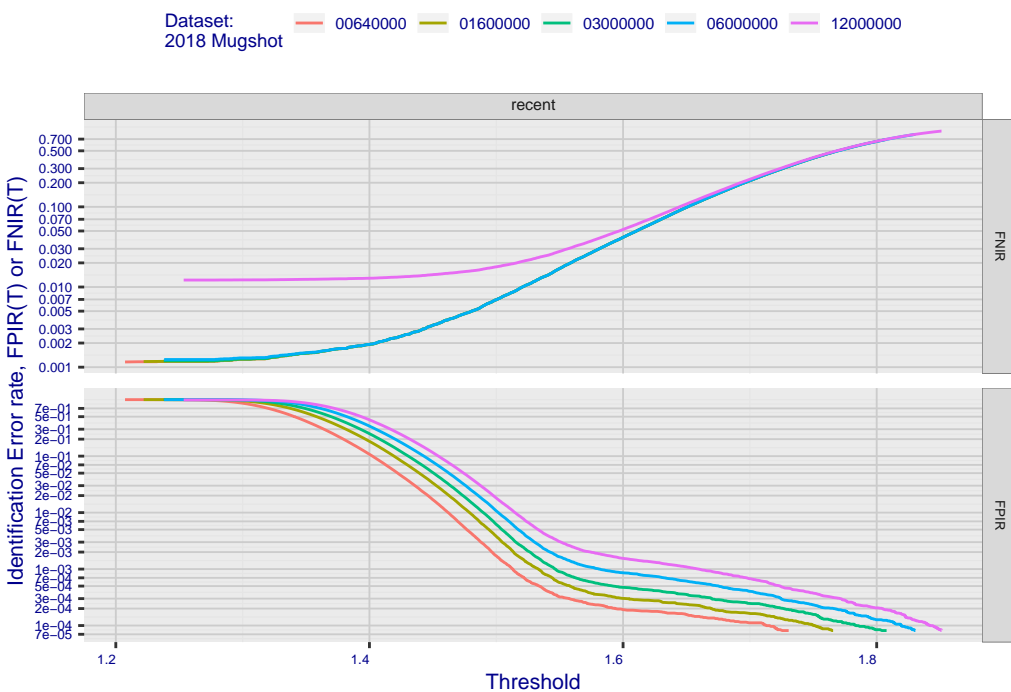


Fig 7: Investigational mode: FNIR(1600000, R, 0) by probe type

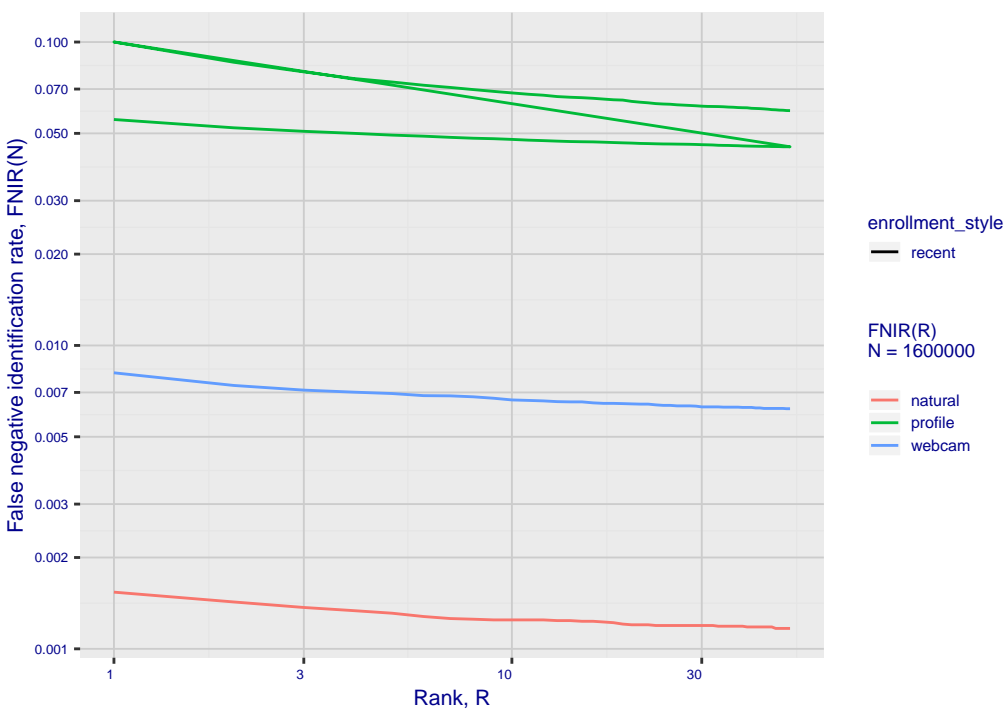


Fig 6: FPIR dependence on T by probe type

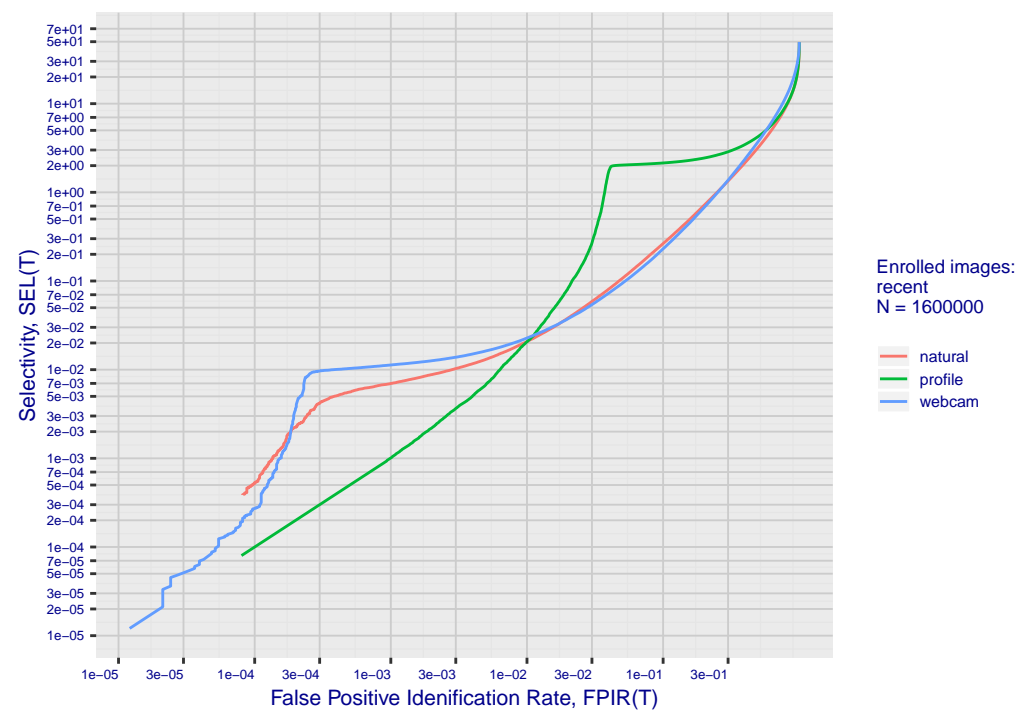
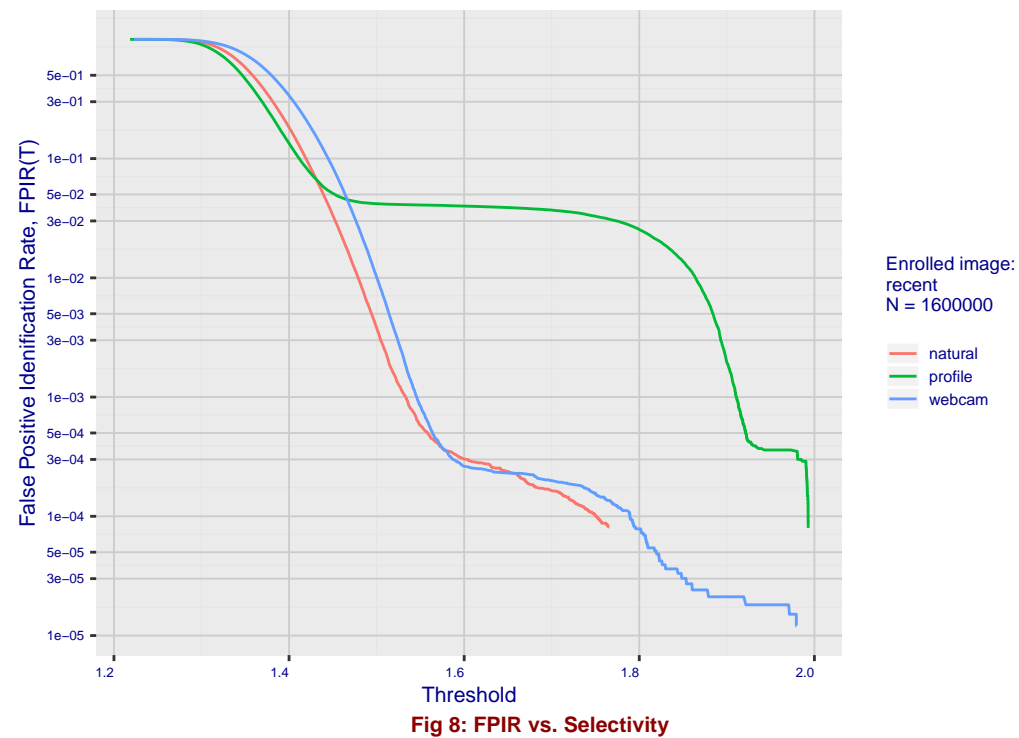


Fig 10: Template duration; search duration vs. N

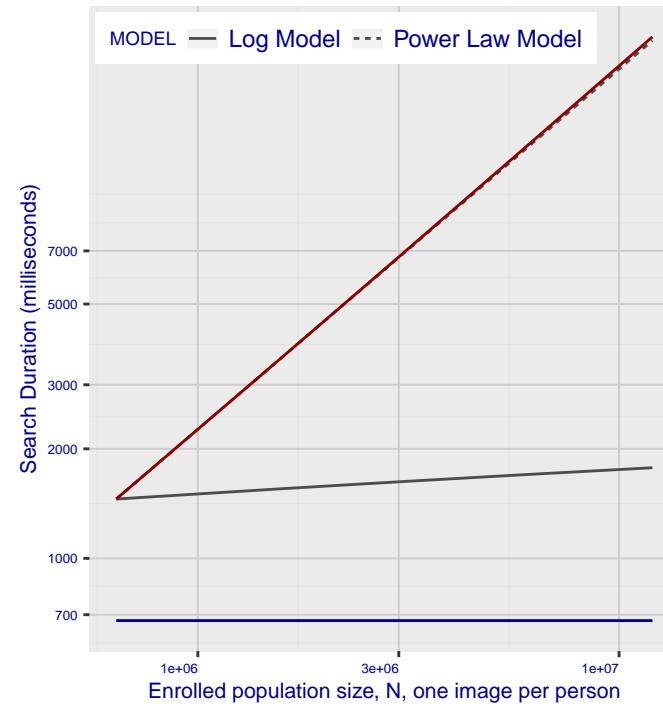


Fig 11: Datasheet

Algorithm: cib_000
Developer: Canon Information Technology (Beijing)
Submission Date: 2020_10_19
Template size: 8196 bytes
Template time (2.5 percentile): 669 msec
Template time (median): 674 msec
Template time (97.5 percentile): 681 msec
Investigation rank 10 --- FNIR(1600000, 0, 1) = 0.0015
vs. lowest 0.0010 from sensetime_004
Identification rank 12 --- FNIR(1600000, 1, L+1) = 0.0125
at FPIR = 0.001 vs. lowest 0.0018 from sensetime_004